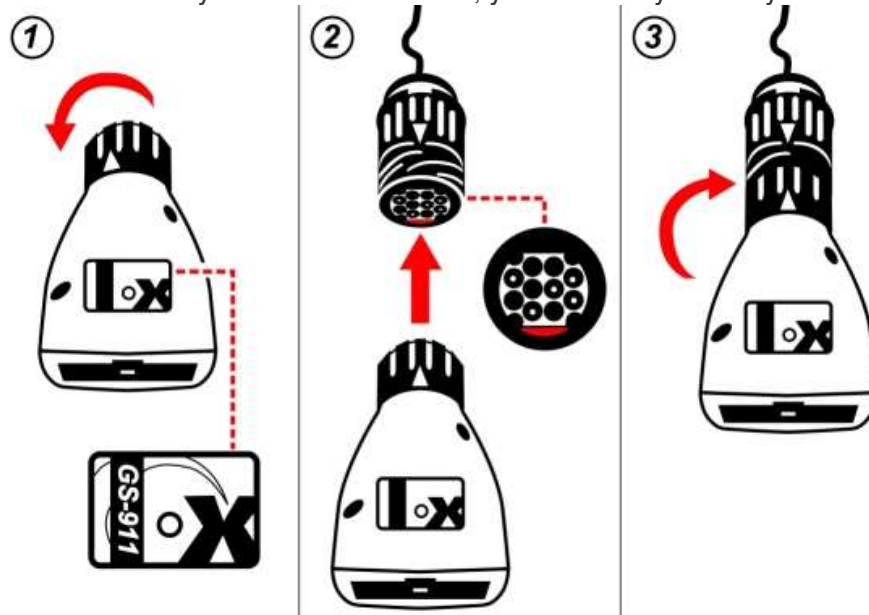


GS-911 installation instructions

Please take careful note of the instructions, especially the USB driver instructions.

a) Installing the GS-911 software

1. Make sure NOT to plug the interface into the PC USB port before installing the software – Windows will try and load the USB driver automatically, and while doing so, WILL load the incorrect driver. If you have done so, you can test this and uninstall the incorrect driver using the instructions in the “*Uninstalling the incorrect USB driver*” section.
2. Download the latest version of the GS-911 software. Install the GS-911 software by following the easy prompts – take note where you install this – the default is **C:\Program Files\GS-911**
3. NOW you are ready to install the USB driver!
4. Once successfully installed and tested, you are ready to use your GS-911



5. How to connect the GS-911 to your Motorcycle's diagnostic connector:
 - ✓ Make sure your interface is the correct side up and the connector ring twisted as far left as possible
 - ✓ Align the receptacle correctly (with red tab at the bottom), and insert.
 - ✓ Finally, twist the connector ring as far right as possible, to lock it in place.
6. Procedure to disconnect, is the reverse of Step 5

b) Installing the USB driver

Note: These instructions are for Windows XP (which we highly recommend with our GS-911 interfaces)

1. Make sure you have already downloaded and installed GS-911 on your PC before following these instructions.
2. Allow the software you just downloaded to install itself on your PC. If you chose to install it somewhere other than the default location, make a note of the folder location, as you will require this for the USB driver installation.
3. Plug your GS-911 interface into your PC's USB port (it is not necessary to connect the interface to the motorcycle yet). A message like the following should appear on your PC's taskbar:



Note: If the “Found New Hardware“ wizard does not appear when you plug in your interface, go into the Device Manager and look for the interface. In Windows Xp, you can typically find the *Device Manager* by Right-Clicking on *My Computer*, then selecting *Manage*. Your GS-911 interface should be under **Universal Serial Bus (USB) Controllers**, or under **Other Devices**. If it's there, Right-Click on it and select **Update Driver**. Then you can start at Step 4 of the instructions below.

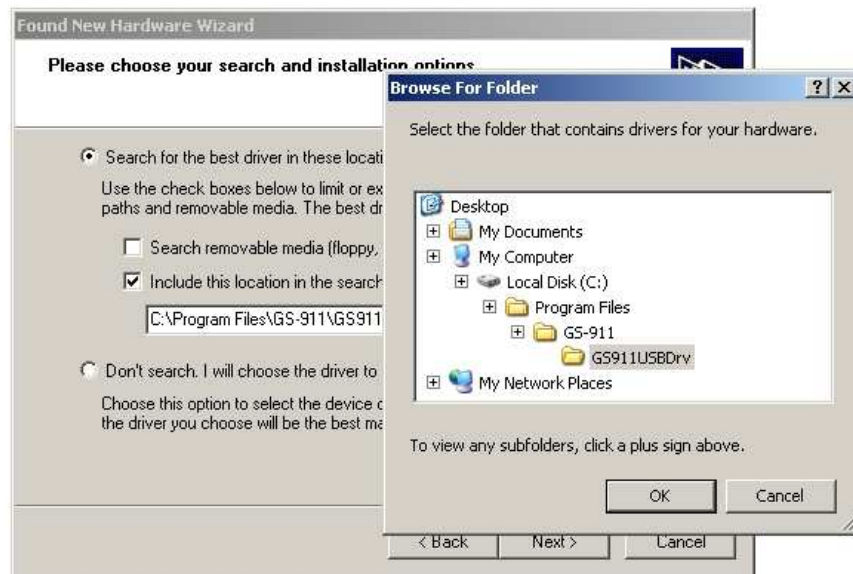
4. The New Hardware Found wizard should appear:



Select **“No, not this time”**, to allow you to choose your own. Click on **[Next >]** to show the following:

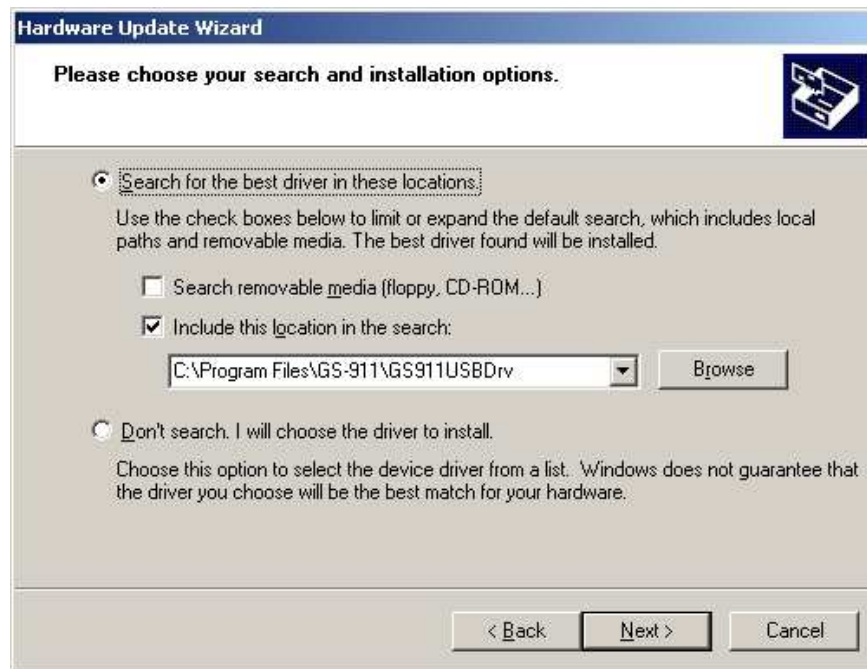


5. On the screen above, select **“Install from a list or specific location (Advanced)”**, then click the **[Next >]** button.
6. The following screen should appear:



7. On the screen above:
 - Select **“Search for the best driver in these locations”**
 - Check **“Include this location in the search:”**
 - Use the **[Browse]** button to find the GS-911 folder (usually **C:\Program Files\GS-911**)
 - Unless you chose a different location when you installed the software.

8. The following should appear:



9. Click the [Next >] button.

10. The following dialog should appear:

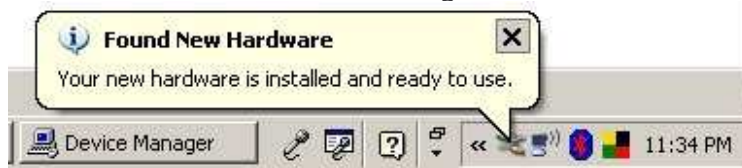


11. The above dialog warns you that we haven't paid Microsoft an arm and a leg... you're going to have to click the [Continue Anyway] button.

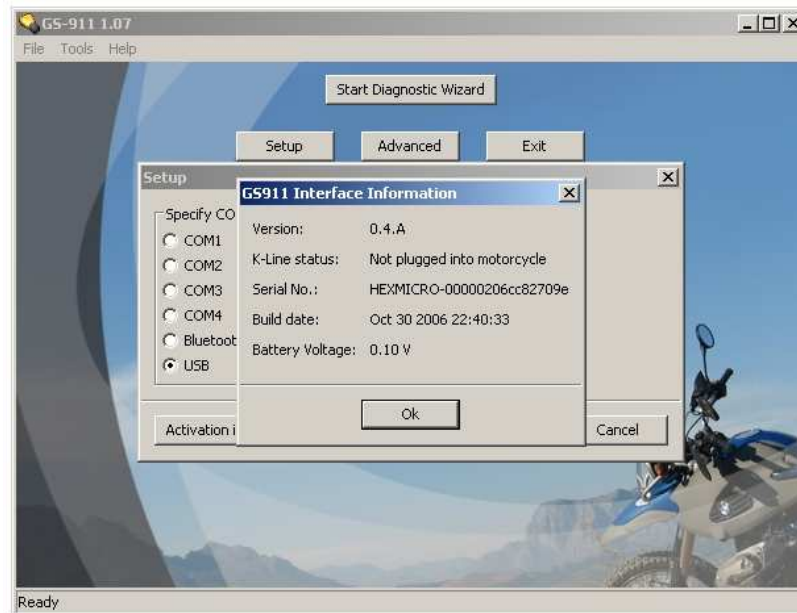
12. The following dialog should appear:



13. Click the **[Finish]** button to complete the installation.
You should also see the following in the taskbar:



14. Now start GS-911 and click on the **[Setup]** button.
Click on the **[Test Interface]** button.
The results should look something like this:



15. Click **[OK]** and **[Ok]** and you're ready to test it on your motorcycle!!! ☺