

GS-911™ Diagnostic Tool for BMW Motorcycles

Introduction

Motorcycles are becoming increasingly complex with each new model. Few are more complex than your BMW motorcycle. Various separate electronic control units that control just about everything and no old-fashioned fuses. These control units continuously test themselves, and have the ability to let you know exactly what problems they identify, whether within themselves, their surrounding sensors or their outputs.

Isn't it about time there was a tool that you could plug into your BMW motorcycle that would help you pinpoint almost any problem? Whether you're at home in your garage, doing a pre-trip inspection or in the middle of a round-the-world adventure, just wanting to get back on the road.

GS-911 is a Diagnostic Tool for BMW Motorcycles – with functionality to read and clear fault codes, view real-time values (sensors and outputs), basic service functionality and the ability to run on most mobile phones. This is the ideal portable tool that should be in everyone's toolkit, on every trip!

What does it do?

GS-911 is a unique software and hardware combination that allows the BMW enthusiast to communicate with the control modules in a safe and controlled manner. In the true spirit of adventure associated with these motorcycles, the tool is also available with a Bluetooth interface, allowing you to use its emergency functionality with most modern mobile phones - no need to carry a bulky laptop on your trip. Essentially the GS-911 shows the fault codes and their text descriptions, along with hardware and software versions, as well as other manufacturer related data. It also allows you to view real-time (live) data from ALL engine controllers, as well as clear fault codes once a repair has been affected.

Advanced service and maintenance functionality includes resetting of service interval reminders, functional (output) tests and adaptation resets. The robust, light and compact design of the unit makes it extremely easy to carry as a field tool which requires no external electrical supply.

Supported Motorcycles

R-Series:

HP2 Enduro, HP2 Megamoto, R1200GS, R1200GS Adventure, R1200RT, R1200R, R1200ST, R1200S, R1200S HP2 R1200C, R1200CL
R1150GS, R1150GS Adventure, R1150RT, R1150R, R1150RS
R1100S, R1100GS*, R1100R*, R1100RS*, R1100RT*
R850C**, R850R**, R850RT**, R850GS*

K-Series:

K1300R, K1300S, K1300GT
K1200GT, K1200R, K1200R Sport, K1200S, K1200LT, K1200GT (non-CAN), K1200RS
K1100LT*, K1100RS*

F-Series:

F800S, F800ST, F800GS, F800R
F650GS (2008+ 2 cylinder)
F650GS, F650GS Dakar, F650CS

C-Series:

C1, C1-200

G-Series:

G650 XChallenge, G650 XCounty, G650 XMoto
G650GS
G450X

S-Series:

S1000RR

* requires a 3-pin Adapter

** some models require a 3-pin Adapter

Updating your GS-911

Functionality is updated by downloading and installing the latest client software. If a firmware update of the GS-911 device is required, this will be done automatically once you have the GS-911 device plugged in and run the updated GS-911 Windows software. Thus it is completely field updateable and does NOT have to be returned to us (or our resellers) for firmware upgrades etc.

Enthusiast interfaces can easily be upgraded to professional versions via the internet.

Professional vs Enthusiast

The enthusiast and professional versions have identical functionality with the exception that the enthusiast version limits the service functionality to a maximum of 10 motorcycles (using the motorcycle's VIN). Emergency functionality (reading/clearing fault codes,

viewing real-time (live) engine data etc.) can be used on an unlimited number of motorcycles, irrespective of whether a GS-911 is an enthusiast or a professional unit!

Systems Covered

A list of updated functionality can be viewed on the "Function chart" page on our website:
<http://www.hexcode.co.za>

- **Engine controller** (BMS-K, BMS-KP, BMS-KP2, BMS-C, BMS-CII, MA2.4, KMSK)
- **ABS** (ABS-II, ABS-N, Integral-ABS, Integral-ABS-CAN, Integral-ABS2- CAN, ABS8M, ABS8MOC, ABS9M)
- **Central Vehicle Electronics** (ZFE)
- **Instrument cluster** (Kombi)
- **Anti-Theft Alarm** (DWA)
- **Tyre Pressure Control** (RDC)
- **Radio**



85 grams
for peace of mind

GS-911™ Diagnostic Tool for BMW Motorcycles

Choosing a GS-911

Deciding on a GS-911 version might initially seem like a complex decision, but with an easy online upgrade to a professional license, the choice is primarily between the USB and USB+Bluetooth versions once you have decided your role as user.

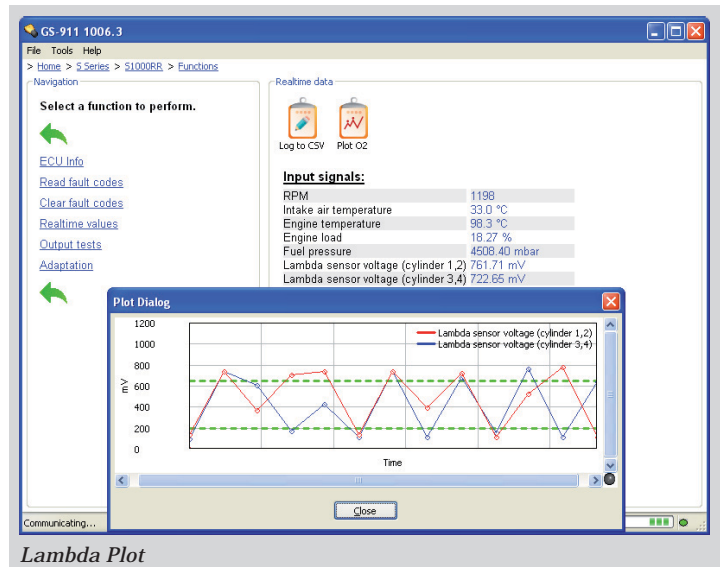
There is no difference in functionality between similarly licensed USB and USB+Bluetooth versions - except of course for the obvious difference in Bluetooth functionality which allows the device to connect with Bluetooth enabled mobile devices, laptops and PC's.

The USB+Bluetooth version is the obvious choice to be used for "on the road" diagnostics since it can easily be paired with portable Bluetooth devices such as mobile phones and laptops.

The Enthusiast/Professional differences only affect the PC/Laptop software, as the Service & Maintenance functionality is added ONLY to the PC/Laptop software.

You can find a comprehensive comparison on:

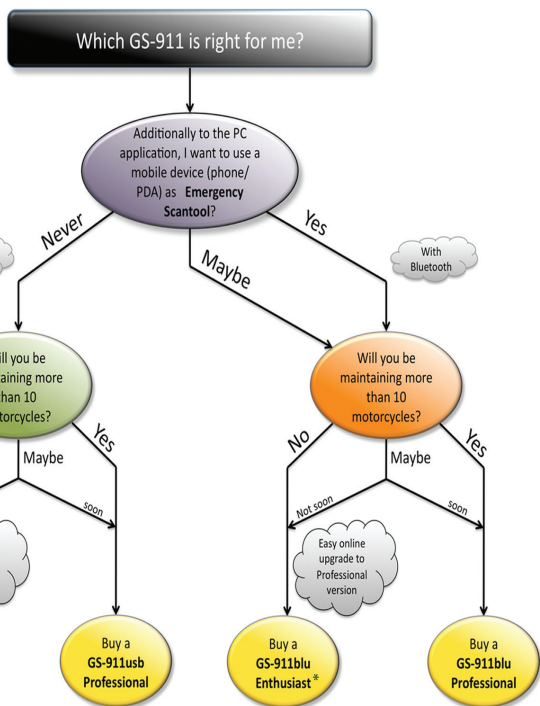
<http://www.hexcode.co.za/products/gs-911/compare>



Lambda Plot

Output Tests

Service Reminder



Official GS-911 reseller:

